

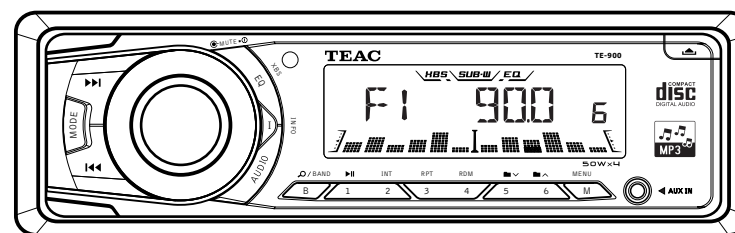
TEAC

TEAC CORPORATION
1-47, Ochiai, Tama-shi, Tokyo 206-8530, Japan

TEAC

**CAR CD/MP3 PLAYER
/ RADIO RECEIVER**

MODEL.: TE-900



INSTALLATION CONNECTION MANUAL

Specifications

Power Supply		12 V DC (11-14 V), Negative Ground
Fuse		15A
Suitable Speaker Impedance		4 - 8Ω
Maximum Power output		50W x 4 channels
Pre-AMP output voltage		2.0 V
Aux-In level		≥ 300mV
Radio	FM	
	Frequency Range	87.5 - 108MHz (100KHz per step in auto search and 50KHz per step in manual search)
	Usable Sensitivity	Better than 15dB at S/N 30dB
	AM(MW)	
	Frequency Range	522 -1620KHz
	Usable Sensitivity	Better than 45dB

Supported formats

Sampling But rate MP3/WMA	
CDROM Mode	
ISO9660 Level	
Sorting Method	Tree sorting
Max File/DIR. Name	64Byte
ID3	
MP3 directory shown	in this manual as "Directory"
MP3 file shown	"Track"
Supports Multi-Session recording.	
Supports CD, CDR and CDRW.	
Disc written by packet Write (UDF) is not supported.	

Note

Product information is subject to change without prior notice.

|| Trouble Shooting ||

Before going through the check list, check wiring connection. If any of the problems persist after check list has been made, consult your nearest service dealer.

No power or no sound

- Car engine is not on. Turn the car engine on.
- Cable is not correctly connected. Check connections.
- Fuse is burnt. Replace fuse.
- Volume is in minimum. Adjust volume to a desired level.
- If the above solutions cannot help, press the RESET button.
- Ensure that the track played is of a compatible format.

Noise in broadcasts

- Signals are too weak. Select other stations with stronger signals.
- Check the connection of the car antenna.
- Change broadcast from Stereo to mono.

Cannot play disc

- Ensure tha the disc label is inserted with the printed side facing up.
- Wipe the disc with fibre cleaning cloth from the centre to the edge in a straight line.
- This disc may be defective. Play another disc.
- Ensure that the CD is a finalised CD/CD-R/CD-RW.
- Ensure that the CD is not encoded with copyright protection technologies.

The CD Skips tracks

- Ensure that the CD is not damaged or dirty.
- Ensure that random mode is deactivated.

Disc cannot be ejected

- Press and hold ▲ .

Preset stations lost

- Battery cable is not correctly connected. Connect the battery cable to the terminal that is always live.

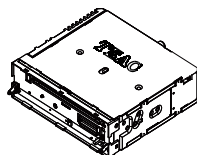
|| Contents ||

What's in the box.....	2
Handling compact Discs.....	3
Notes on CDs.....	3
Notes on Discs.....	3
Installation.....	4
Removing the unit.....	4
Wiring Diagram.....	5
The major function on the front panel.....	6
The major function on the back view.....	7
Adjust audio settings.....	7
Adjust system menu settings.....	8
CD/MP3/WMA operations.....	9
MP3/WMA operations.....	9
MP3/WMA File/Folder search.....	10
Id3 information display.....	10
File playing order.....	10
File / Folder play.....	11
External connection and media player.....	12
Connect the Aux-In.....	12
Remote Control.....	13
Trouble shooting.....	14
Specification.....	15
Supported formats.....	15

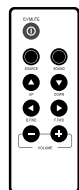
What's in the box

Check and identify the contents of your package:

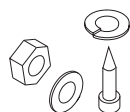
In car audio system



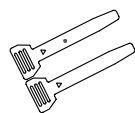
Remote control



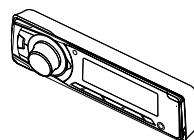
Screws & Nuts (4 pieces)



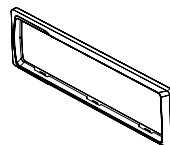
Disassembly tool (2 pieces)



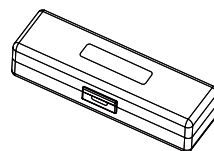
Front panel



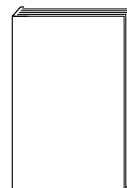
Trim plate



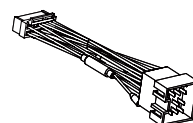
Carrying case for front panel



User manual



Standard connector



Hanging iron bar



Remote Control

⚠ Do not install any battery other than CR2025 or its equivalent; otherwise, it may explode.

Store the battery in a place where children cannot reach to avoid risk of accident.

Keep battery away from heat, sunshine or fire. Never discard battery in fire.

When the remote control is not used for long periods, remove the battery.

For First-time Using

When you use the remote control for the first time, please remove the insulation sheet.



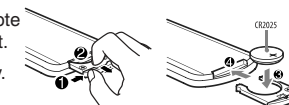
Replacing Battery

If the device to be controlled no longer responds to any key press even under favourable circumstances or the device to be controlled indicates a weak battery, please replace the battery of the remote control.

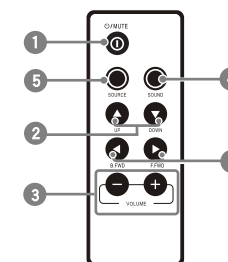
Push the battery compartment lid on the back of the remote control in direction of the gap and open the battery compartment.

Remove the dry battery, and replace with 1 new lithium battery.

Close the battery compartment.



Key Functions

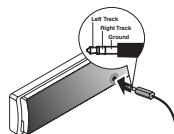


Key	Function
 ○/MUTE	Turns the power on if pressed briefly or mute the sound when the power is on. Turns the power off if pressed and held.
 ▲/▼ (Up/Down)	Select the preset radio station if pressed briefly. Change the folder of the MP3/WMA discs. Note ▲ : Returns to the previous menu. ▼ : Confirms the selection.
 VOLUME	Adjust the volume level.
SOUND	Select the sound mode.
SOURCE	Select the audio source mode.
 ◀/▶ (Backward /Forward)	Search for station automatically if pressed briefly. Search for station manually if pressed and held. Fast forward or backward the track if pressed and held. Change the tracks if pressed briefly.

External Connection and Media Player

Connect the Aux-In

Connect the external signal to AUX in jack located at the front of the panel, then press Mode button to select Aux mode. Press Mode Button again to cancel Aux Mode and return to previous mode.




Handling Compact Discs

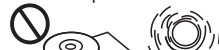
On a rainy day or in a very damp area, moisture may condense on the lenses inside the unit. Should this occur, the unit will not operate properly. In such a case, remove the disc and wait for about an hour until the moisture has evaporated.


Notes on CDs

A dirty or defective disc may cause sound dropouts while playing. To enjoy optimum sound, handle the disc as follows.

Handle the disc by its edge.  To keep the disc clean, do not touch the surface.

Do not stick paper or tape on the disc. 


Do not expose the discs to direct sunlight or heat sources such as hot air-ducts, or leave them in a car parked in direct sunlight where there can be a considerable rise in temperature inside the car (P.3). 

Before playing, clean the discs with an optional cleaning cloth. Wipe each disc from the centre out. 


Do not use solvents such as benzine, thinner, commercially available cleaners, or antistatic spray intended for analog discs.

Notes on Discs

If you use the discs explained below, the sticky residue can cause the CD to stop spinning and may cause malfunction or ruin your discs.

Do not use second-hand or rental CDs that have a sticky residue on the surface (for example, from peeled-off stickers or from ink, or glue leaking from under the stickers).  **There are paste residue Ink is sticky.**


Do not use rental CDs with old labels that are beginning to peel off.

Stickers that are beginning to peel away, leaving a sticky residue. 

Do not use your CDs with labels or stickers attached. 

Labels are attached

Do Not Use Special Shape CDs

Be sure to use round shape CDs only for this unit and do not use any special shape CDs. Use of special shape CDs may cause the unit to malfunction. 

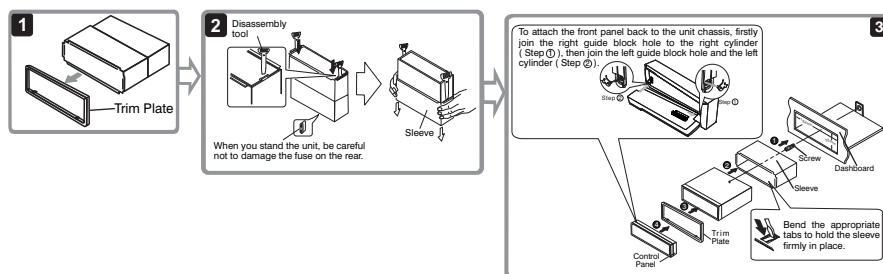
Be sure to use CDs with disc mark only for this unit.



CD-Rs and CD-RWs which have not undergone finalization processing cannot be played. (For more information on finalization processing, refer to the manual for your CD-R/CD-RW writing software or CD-R/CD-RW recorder.) Additionally, depending on the recording status, it may prove impossible to play certain CDs record on CD-R or CD-RW.

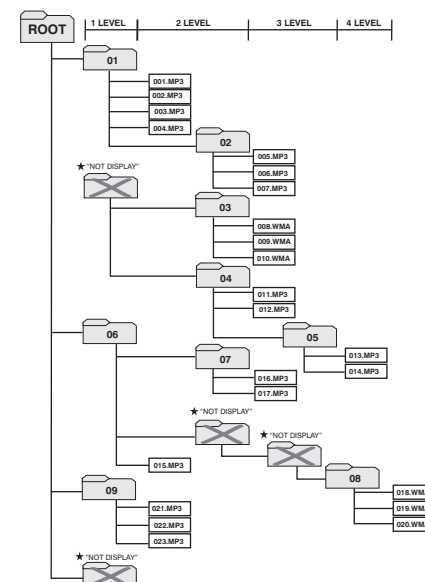
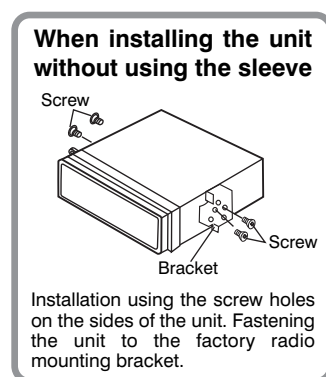
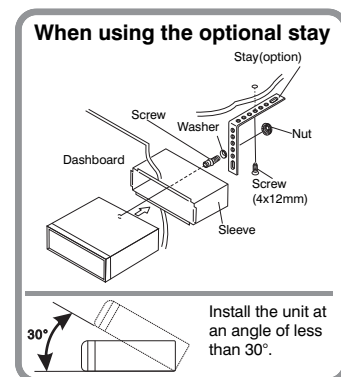
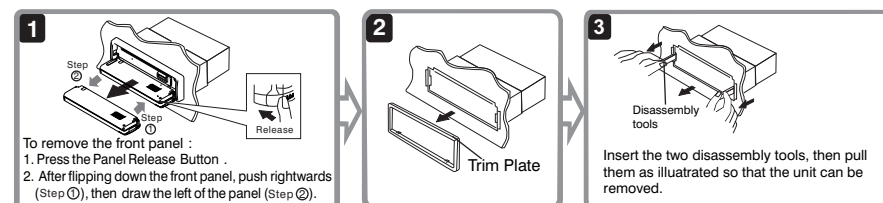
Installation

The following illustration shows a typical installation. If you have any questions or require information regarding installation kits, consult your customer car audio dealer or a company supplying kits. If you are not sure how to install this unit correctly, have it installed by a qualified technician.



Removing the unit

Before removing the unit, release the rear Section.



- The equipment assigns folder numbers. The user can not assign folder numbers.
- ★ • It is not possible to check folders that do not include MP3/WMA files. (These folders will be skipped without displaying the folder number and name)

File/Folder play

There are three different play methods as following:

File/Folder Intro play:

Press M2 button more than 3 seconds during playing MP3/WMA disc for "intro play" all files of the current folder. Intro play should restart from the first song of the current folder, after all files in the current files have been intro-played.

To disable current folder “intro play”, long press M2 button more than 3 seconds.

Press M2 button less than 3 seconds is "intro play" all files on the disc. Intro play should re-start at the very first file of the disc after all files in the disc has been intro played.

To disable all files "intro play", press M2 button less than 3 seconds

File/Folder Repeat play :

Press M3 button more than 3 seconds during playing MP3/WMA disc for “repeat play” all files of the current folder. And keep on repeat playing the current folder until “repeat play” is disabled.

To disable current folder “repeat play”, long press M3 button more than 3 seconds

Press M3 button less than 3 seconds to “repeat play” the current file. And keep on repeat Playing the current file until the “repeat play” is disabled.

To disable current file "repeat play", press M3 button less than 3 seconds

File/Folder Random play:

Press M4 button more than 3 seconds during playing MP3/WMA disc to “random play” all files of the current folder.

To disable current folder “random play”, long press M4 button more than 3 seconds

Press M4 button less than 3 seconds is "random play" all files on the disc. To disable all file "random play", press M4 button less than 3 seconds.

Folder Up / Down Play

Press M5 button less than 3 seconds to One Folder Down

Press M6 button less than 3 seconds to One Folder Up

When using a CD writer to record MP3/WMA up to the maximum disc capacity, disable additional writing. For recording on an empty disc up to the maximum capacity at once, check disc at once.

Entering ID3 Tag

This unit supports ID3 tag versions 1.0 and 1.1.

Entering File and Folder Names

Names using the code list characters are the only file names and folder names that can be entered and displayed. Using any other character will cause the file and folder names to be displayed incorrectly. The unit recognizes and plays only files with the MP3/WMA extension.

Note: A file name entered with characters not on the code list may not play correctly.

Writing Files into a Media

When a media containing MP3/WMA data is loaded, the unit checks all data. If the media contains many folders or non-MP3/WMA files, MP3/WMA play will be delayed, it may take time for the unit to move to the next file, and searches may not be performed smoothly. Loading such a media may produce loud noise and cause damage to the speakers. **Do not attempt to play a media containing a non-MP3/WMA file with the MP3/WMA extension or a media containing non MP3/WMA files.**

Bit Rates

The unit supports bit rates from 32 - 320 kbps.

MP3/WMA File or Folder Search

Direct File Number Searching

Press BROWSE/BAND button. The LCD will display **NUMBER**, and the **↔** will blink. Rotate the Encoder Volume Knob to select the desired track number, then press ENTER confirm and play the selected file.

Folder / Files Navigate Searching

Press BROWSE/BAND button twice. The LCD will display **BROWSE**, and the **↔** will blink. Rotate the Encoder Volume Knob to navigate through all folders and sub-folders on the disc. The folder names will be displayed on the LCD. Press ENTER to play the first file in the folder. Press the ENTER to access the sub-folders or files. Rotate the Encoder Volume Knob to navigate, then press ENTER to confirm and begin file play. During navigation search, rotate the Encoder Volume Knob counterclockwise to move back to the last upper level of a folder.

ID3 information display

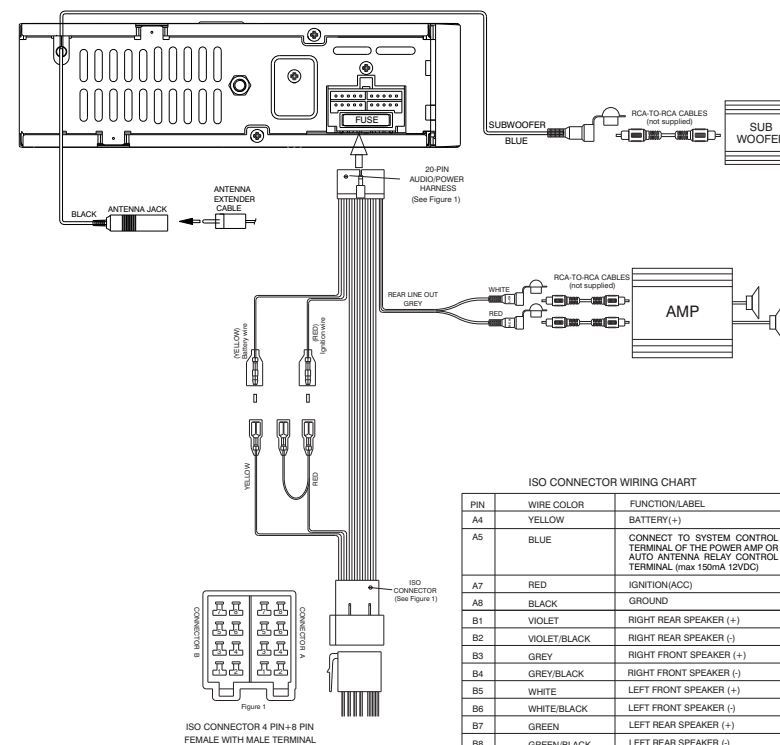
If any MP3/WMA file recording with ID3 Tag information. The ID3 information such like Album title, Track title, Artist Title will be displayed and automatic scrolling through the LCD while the file is playing. User also allows pressing the INFO button repeatedly to view the ID3 tag information manually.

Files playing order

When selected for play, Folder Search, File Search or Folder Select, files and folders are accessed in the order in which they were written by the PC writer. Because of this, the order in which they are expected to be played may not match the order in which they are actually played. For example, a media with the following folder/file hierarchy is subject to Folder Search, File Search or Folder Select as shown below.

An outline of a Media with MP3/WMA is shown below. Subfolders are shown as folders in the folder currently selected.

Wiring Diagram



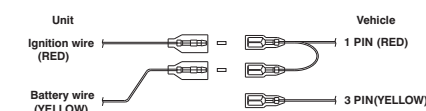
⚠ WARNING Connecting the ISO Connector

The pin arrangement for the ISO connectors depends on the type of vehicle you drive. Make sure to make the proper connections to prevent damage to the unit. The default connection for the wiring harness is described in ❶ below. If the ISO connector pins are set as described in ❷ or ❸, make the connection as illustrated.

- ❶ (Default setting) The 1 pin (red) of the vehicle's ISO connector is linked with the ignition, and the 3 pin (yellow) is connected to the constant power supply.
- ❷ The 1 pin (red) of the vehicle's ISO connector is connected to the constant power supply, and the 3 pin (yellow) is linked to the ignition.

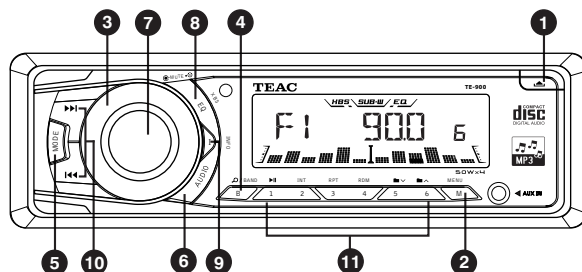


- ❸ The 3 pin (yellow) of the vehicle's ISO connector is not connected to anything, while the 1 pin (red) is connected to the constant power supply (or both the 1 (red) and 3 (yellow) pins are connected to the constant power supply).



When the connection is made as in ❸ above, the unit's power will not be linked to the ignition key. For that reason, always make sure to turn off the unit's power when the ignition is turned off. To link the unit's power to the ignition, connect the ignition cable (ACC...red) to a power source that can be turned on and off with the ignition key.

The major function on the front panel



No.	Item	Descriptions																		
1	(RELEASE)	Press this button to open the control panel.																		
2	SYSTEM MENU	Press this button to access into the System Menu mode.																		
3	VOLUME KNOB	Rotate the encoder volume to increase and decrease the volume. (The Maximum volume level is "50".)																		
	BAND	Short press this button to change between BAND FM1,FM2,FM3, AM1 (MW1) or AM2 (MW2).																		
4		Under Disc media playback mode, short press this button is access into the Music Folder/File searching mode. Rotate the encoder knob to navigate thru Folder and File list. Once the desire file appearing on the LCD. Press 'Power/Mute' button to confirm and start file play.																		
5	MODE	Press this button to select different mode playback mode: AUX / TUNER / CDP PLAY.																		
6	AUDIO MENU	Press this button to access into the Audio Menu mode.																		
	MUTE	Short press this button to turn the Mute On/Off.																		
7	(POWER)	Press this button or any other button on the front panel (except Release) to turn the unit on. Long press this button again to turn the unit off.																		
8	EQ	Press this button to select the preset Equalizer setting: FLAT -> CLASSICS -> POP M -> ROCK M -> USER																		
	XBS	Hold press this button to turn On / Off theiX-BASS booster function.																		
9	INFO	Under Tuner mode, Press this button briefly will be enter to the Clock mode. Under Disc media playback mode, press this button repeatedly to display ID3 information: Track number and elapsed play time-> Folder-> File-> Album-> Title-> Artist-> Clock.																		
	TUNE UP/DOWN	Under tuner mode, press and hold momen-tarily to enter into the Auto Seek/Manual Seek mode.																		
10	FILE UP/DOWN	Under Disc media playback mode,press these buttons to skip a chapter/track/scene/file.																		
	FAST FORWARD/BACKWARD	Under Disc media playback mode, press and hold momentarily to fast forward/backward the Disc.																		
11	PRESET NUMERIC BUTTONS	Under Tuner mode, short press the Numeric Buttons to recall the preset stations. Hold press the Numeric Buttons to store the listening station. Under Disc media playback mode, short press the Numeric Buttons to perform the below operation:																		
	<table><tr><th>No.</th><th>1</th><th>2</th><th>3</th><th>4</th><th>5</th><th>6</th></tr><tr><th>Button</th><td>S-Pause/Play</td><td>S-Intro</td><td>S-Repeat</td><td>S-Random</td><td>Folder Up</td><td>Folder Down</td></tr></table>						No.	1	2	3	4	5	6	Button	S-Pause/Play	S-Intro	S-Repeat	S-Random	Folder Up	Folder Down
No.	1	2	3	4	5	6														
Button	S-Pause/Play	S-Intro	S-Repeat	S-Random	Folder Up	Folder Down														

CD/MP3/WMA operations

INSERT AND EJECT CD

Insert a CD label-side up with the unit turned on, and the disc will begin to play. Press the Eject button to stop CD play and eject the CD. The unit does not have to be turned on to eject the CD.

CD-DA OPERATION

PAUSE BUTTON (⏸)

Press the PAUSE button to suspend disc play. Press the PAUSE button again to resume disc play.

TRACK SELECT (⏮ ⏭)

Press the Up Tuning or Down Tuning button (⏮ ⏭) for less than one second to advance to the next track on the CD. The selected track number will appear on the display. Press and hold the Up Tuning or Down Tuning button (⏮ ⏭) for more than one second to fast forward or fast reverse through the disc. CD play starts when the button is released.

INTRO BUTTON (INT)

During disc play, press INT (Intro) button to play the first 10 seconds to each track on the disc. When the desired track is reached, press INT (Intro) button again to end the scan and play the selected track.

REPEAT BUTTON (RPT)

Press RPT (Repeat) button during disc play to continuously repeat the track. Press RPT (Repeat) button again to stop Repeating.

RANDOM BUTTON (RDM)

Press RDM (Random) button during disc play to play all tracks on a CD in random, shuffled order. Press RDM (Random) again to stop random play.

MP3/WMA operations

MP3 and WMA (Windows Media Audio) music files are audio compression format. This unit can play MP3/WMA directly from files contained on a CD-R/RW.

Notes on MP3/WMA Play

This unit can play MP3 (MPEG1, 2, 2.5 Audio Layer 3). However, the MP3 recording media and accepted formats are limited. When writing MP3/WMA, pay attention to the following restrictions.

Acceptable Medium Formats

The following formats are available for the media used in this unit. The maximum number of characters used for file name including the delimiter (".") and three-character extension are indicated in parentheses.

ISO 9660 Level 1 (11 characters)
ISO 9660 Level 2 (31 characters)
Joliet (31 characters)
Romeo (31 characters)

Up to 200 characters can be displayed in the long file name format. For a list of available characters, see the instruction manual of the writing software and the section "Entering File and Folder Names" below. The media reproducible on this unit has the following limitations:

Maximum number of nested folders: 8
Maximum number of files per disc: 2000
Maximum number of files per media device: 2000
Maximum number of folders per disc: 255

MP3/WMA written in the formats other than the above may not be successfully played and their file names or folder names may not be properly displayed.

MP3/WMA Encoder and CD Writer Settings

Use the following settings when compressing audio data in MP3 data with the MP3 encoder.

Transfer bit rate : 32- 320 kbps
Sampling frequency : 32,44.1,48 kHz(WMA) 16,22.05,24,32,44.1, 48kHz (MP3)

Adjust system menu settings

Press MENU button to access the System Menu. User can be select below function:

ASM ON/OFF (Auto Store)

User has 5 seconds to use the Encoder Volume knob to turn on the ASM ON/OFF mode. The six strongest stations of the selected band are saved in preset channel automatically.

LOCAL/DISTANCE SELECT

This feature is used to designate the strength of the signals at which the radio will stop during automatic tuning. "Distance" is the default, allowing the radio to stop at a broader range of signals. To set the unit to select only strong local stations during automatic tuning, rotate the volume control until "Local" appears in the display.

TUNER AREA

User can use the Encoder Vol Knob to select the frequency spacing which is most appropriate for the area this unit is used in, EUROPE, USA, ASIA, or LATIN.

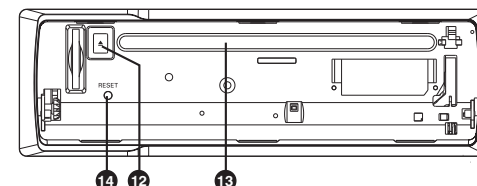
TIME SET (CLK)

The time on the clock will be set to 12:00 as the default. Program the current time by rotating the volume control clockwise to adjust the minutes and counterclockwise to adjust the hours.

BEEP TONE (BEEP)

The beep tone feature allows the selection of an audible beep tone to be heard each time a button is pressed on the face of the radio. "BEEP TONE On" is the default display. Rotate the volume control to select the "BEEP TONE OFF" option.

The major function on the back view



No.	Item	Decriptions
12	CD EJECT	Press this button to eject the Disc.
13	DISC SLOT	Insert the disc into CD slot.The CD will begin to play.
14	RESET	User can reset the unit to its default setting. Press this button by using a ball-point pen or a similar tool.

Adjust audio settings

Press AUDIO button to access the Audio Menu. The below Audio Setting can be select:

VOL (Volume Level)

User has 5 seconds to use the Encoder Volume knob to adjust the desire volume level, the volume level will be shown on the LCD display ranging from 00 (lowest) to 50 (highest).

SUBW ON/OFF (Subwoofer)

Turn the Encoder Volume knob to select Subwoofer function On/Off.

BAS (Bass Level)

User has 5 seconds to use the Encoder Volume knob to adjust the desired Bass level range from -10 to +10.

TRB (Treble Level)

User has 5 seconds to use the Encoder Volume knob to adjust the desired Treble level range from -10 to +10.

BAL (Balance)

User has 5 seconds to use the Encoder Volume knob to adjust the Balance between the right and left speakers from 10R (full right) to 10L (full left).

FAD (Fader)

User has 5 seconds to use the Encoder Volume knob to adjust the Fader between the front and rear speakers from 10R (full rear) to 10F (full front).